

MAHATMA
玛哈特

全球高端矫平设备领导品牌
The world's leading brand of high-end leveling equipment

几秒 矫平各种金属板材

专业矫平

玛哈特集团
MAHATMA GROUP

☎ **400-0898-858**

☎ 0769-8630 1265 ✉ mht@gddys.com

🌐 www.mahatma.com.cn

📍 广东省东莞市石碣镇西南嘉应一街3号玛哈特工业园
MAHATMA Industrial Park, No. 3, Jiaying 1st Street, Shijie Town, Dongguan City, Guangdong Province

📍 江西省抚州市高新区大觉山路玛哈特工业园
MAHATMA Industrial Park, Dajue Road, High-tech Zone, Fuzhou City, Jiangxi Province

📍 香港九龙尖沙咀柯士甸路7-9号焕利商业大厦7楼63室
Room 63, 7/F, Woon Lee Commercial Building, 7-9 Austin Ave, Tsim Sha Tsui, Kowloon, Hong Kong



公众号二维码
Official Account



集团介绍

Group Introduction



MAHATMA

■ 玛哈特全球智能制造中心

MAHATMA global Intelligent manufacturing center

位于江西抚州国家高新技术开发区，一期占地20000m²，二期占地30000m²，员工200+；研发专家20+。我们拥有先进的生产设施和设备，注重自动化和智能化应用，坚持投资和改进，以提高生产效率和产品质量。

致力于技术进步和创新，为客户提供最优质的产品和服务。



Located in Fuzhou National High tech Development Zone, Jiangxi Province, the first phase covers an area of 20000 square meters and the second phase covers an area of 30000 square meters, with over 200 employees; More than 20 R&D experts. We have advanced production facilities and equipment, focus on automation and intelligent applications, adhere to investment and improvement, to improve production efficiency and product quality.

Dedicated to technological progress and innovation, providing customers with the highest quality products and services.

■ 集团简介

Group profile

玛哈特以助力智能制造国产替代与产业升级为使命，自2003年成立以来，在矫平机、自动化产线、智慧系统及配套搭载设备等前沿创新领域，不断地革新技术产品与解决方案。

是一家集研发、生产、销售、服务四位一体的钣金零件矫平智造解决方案服务商。是具有全球竞争力的国际高端矫平设备制造领导品牌，同时也是国家高新技术及专精特新企业。

玛哈特作为智慧超级矫平技术设备的品类开创者，实现了从低端到高端矫平设备的全品类覆盖，且二十余年的行业积累与技术创新，我们的制造工艺与矫平精度均已达到国际最先进水平。

MAHATMA mission is to assist in the domestic substitution and industrial upgrading of intelligent manufacturing. Since its establishment in 2003, it has continuously innovated its technological products and solutions in cutting-edge innovation fields such as leveling machines, automated production lines, smart systems, and supporting equipment.

We are a sheet metal parts straightening intelligent manufacturing solution service provider that integrates research and development, production, sales, and service. It is a leading international high-end leveling equipment intelligent manufacturing brand with global competitiveness, as well as a national high-tech and specialized new enterprise.

As the pioneer of intelligent super leveling technology equipment, MAHATMA has achieved full category coverage of leveling equipment from low-end to high-end. With more than 20 years of industry accumulation and technological innovation, our manufacturing process and leveling accuracy have reached the most advanced international level.

2003年

公司成立
Found

15000+

客户案例
Cases

50000^{m²}

生产基地
Plants

10家

分公司
Branches

350+

公司员工
Employee

20000^{m²}

研发中心
R&D Center

■ 玛哈特全球研发实验中心

MAHATMA global R&D center

位于东莞，占地约20000m²，员工150+，研发专家30+。我们集设计、研发、代工、销售、展厅于一体，投入巨大资源和人力，聚集行业顶尖专家和科学家，致力于智慧超矫技术的应用和发展。并携手清华大学等国内外顶尖高校合作打造产学研基地，继续探索技术前沿，开发高效、精准、安全、节能的超矫技术，为产业升级制造做出贡献。

创新方法和工具。我们将致力于开发高效、精准、安全、节能的超矫技术，应用于钣金、工业、交通、能源等多个领域，为人类社会的可持续发展做出贡献。

Located in Dongguan, covering an area of approximately 15000 square meters, with over 150 employees and 30 research and development experts. We Integrating design, research and development, OEM, sales, and exhibition halls, investing huge resources and manpower, Gathering top-notch experts and scientists in the industry, dedicated to the application and development of intelligent super correction technology. And collaborate with top domestic and foreign universities such as Tsinghua University to build industry university research bases, continuing to explore At the forefront of technology, we aim to develop efficient, precise, safe, and energy-saving super straightening technologies for industrial upgrading Make contributions to manufacturing.

Innovative methods and tools. We will be committed to developing efficient, precise, safe, and energy-saving super straightening technologies, which will be applied in multiple fields such as sheet metal, industry, transportation, and energy Domain contributes to the sustainable development of human society.

产品体系

Product Series

矫平天下不平事

Let things go back right way

用全新智慧超矫技术重构工业机械制造相关行业

Reconstructing industrial machinery manufacturing-related industries with new smart super-correction technology

御 Royal 尊贵型

伺服液压高精度矫平系列

Servo hydraulic high precision leveling machine series



悟 Wits 旗舰型

高端智慧数控超矫系列

Intelligent Servo-CNC Leveling machine series



慧 Mastery 豪华型

智慧数控精密矫平系列

Intelligent CNC Leveling machine series



渺 Vague 基础型

二四重普通矫平系列

Two/four layers leveling machine series



渺 Vague 基础型 二四重普通矫平系列

VAGUE (Basic style): Two / four layers leveling machine series

该系列矫平机在性能和自动化程度上不如高端矫平机，但其简单的设计、易于操作和维护的特点使其成为许多小型加工企业和低成本生产线的理想选择。旨在利用材料的“包辛格效应”对板材进行多次反复弯曲，以消除材料内应力，矫平材料平面度，达到工艺要求的平整精度！相较于自动化程度高的矫直机，此款矫平机可能需要更多的手动操作，例如手动调节辊隙，更适合小批量生产或低频率的加工需求而且成本相对较低，适合预算有限或对矫直精度要求不高的小型加工场所使用。

This series of levelers are not as good as high-end levelers in terms of performance and automation, but their simple design, easy operation and maintenance make them an ideal choice for many small processing companies and low-cost production lines. It aims to use the "Bauschinger effect" of the material to repeatedly bend the plate to eliminate the internal stress of the material, level the flatness of the material, and achieve the flatness accuracy required by the process! Compared with highly automated straightening machines, this leveling machine may require more manual operations, such as manually adjusting the roll gap. It is more suitable for small batch production or low-frequency processing needs. The cost is relatively low, and it is suitable for those with limited budgets. Or used in small processing sites that do not require high straightening accuracy.



不占空间	紧凑型设计，体积较小，最大化空间利用，适合空间有限的工作环境
节能低碳	低能耗运作，助力企业实现绿色节能，显著降低电力与运营成本
成本效益	设备成本低，适合预算有限或对矫平精度要求不是特别高的场合
提升精度	能够改善材料的平整度，减少因材料瑕疵导致的浪费，提高材料的利用率
技术革新	优化矫平流程，采用先进的反复弯曲技术，节省材料与人工，提高生产效率和经济效益
维护简单	设备的结构相对简单，维护和修理起来通常比较容易，且维护成本较低
投资回报	低成本投入，快速实现投资回报，以较低的成本满足一般的生产需求
适用性	更适合比较单一的产品矫平，精密运作，简单高效

Does not take up space	Compact design, smaller size, maximizes space utilization, suitable for working environments with limited space;
Energy saving and low carbon	Low energy consumption operation helps enterprises achieve green energy saving and significantly reduce power and operating costs;
Improve accuracy	The equipment cost is low and suitable for occasions with limited budget or low leveling accuracy requirements;
Cost-effectiveness	It can improve the flatness of materials, reduce waste caused by material defects, and improve material utilization;
Technological innovation	Optimize the leveling process and adopt advanced repeated bending technology to save materials and labor and improve production efficiency and economic benefits;
Easy maintenance	The structure of the equipment is relatively simple, maintenance and repair are usually easier, and maintenance costs are low;
Return on investment	Low-cost investment, rapid return on investment, and low cost to meet general production needs;
Applicability	More suitable for single product leveling, precise operation, simple and efficient.

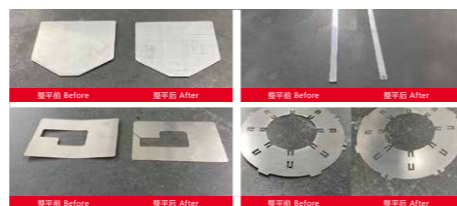
渺 Vague 基础型 四重普通矫平系列

VAGUE (Basic style): Four layers leveling machine series



■ 整平前后对比图

Comparison chart before and after leveling



■ SHS12系列(Series)

厚度(Thickness): 0.03-0.5mm

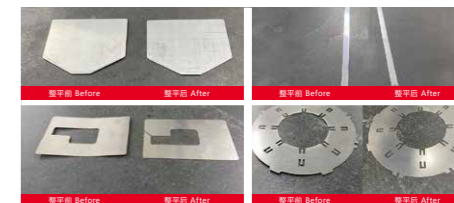
机型 Model	SHS12-200-19A	SHS12-300-19A	SHS12-400-19A
宽度 Width	0-200mm	0-300mm	0-400mm
辊径 Roll diameter	12	12	12
额定厚度 Rated thickness	0.03-0.5mm	0.03-0.5mm	0.03-0.5mm
最大厚度 Maximum thickness	1.0mm	1.0mm	1.0mm
辊数 Number of rolls	19	19	19
最短工件 Shortest part	20	20	20
矫平速度 Leveling speed	0-10m/min	0-10m/min	0-10m/min
电压 Voltage	AC三相380VAC 3-phase 380V	AC三相380VAC 3-phase 380V	AC三相380VAC 3-phase 380V
选配 Optional	<ul style="list-style-type: none"> 滚轮快速清洁装置 Roller quick cleaning device 进出料流水线 Inlet and outflow assembly line 	<ul style="list-style-type: none"> 上下料取料机械手 Loading and unloading manipulator 自动堆料升降台 Automatic stacking lifting platform 	<ul style="list-style-type: none"> 上下料取料机器人 Loading and unloading robot 自动检测平台 Automatic detection platform
<p>更大、特殊尺寸、更快速度可按需求订制 Larger, special size, faster speed can be customized according to demand</p>			

*设备参数根据材质(Material)Q235/屈服强度(Yield strength)235MPa计算。



■ 整平前后对比图

Comparison chart before and after leveling



■ SHS15系列(Series)

厚度(Thickness): 0.08-1.0mm

机型 Model	SHS15-200-19A	SHS15-300-19A	SHS15-400-19A
宽度 Width	0-200mm	0-300mm	0-400mm
辊径 Roll diameter	15	15	15
额定厚度 Rated thickness	0.08-1.0mm	0.08-1.0mm	0.08-1.0mm
最大厚度 Maximum thickness	1.5mm	1.5mm	1.5mm
辊数 Number of rolls	19	19	19
最短工件 Shortest part	30	30	30
矫平速度 Leveling speed	0-10m/min	0-10m/min	0-10m/min
电压 Voltage	AC三相380VAC 3-phase 380V	AC三相380VAC 3-phase 380V	AC三相380VAC 3-phase 380V
选配 Optional	<ul style="list-style-type: none"> 滚轮快速清洁装置 Roller quick cleaning device 进出料流水线 Inlet and outflow assembly line 	<ul style="list-style-type: none"> 上下料取料机械手 Loading and unloading manipulator 自动堆料升降台 Automatic stacking lifting platform 	<ul style="list-style-type: none"> 上下料取料机器人 Loading and unloading robot 自动检测平台 Automatic detection platform
<p>更大、特殊尺寸、更快速度可按需求订制 Larger, special size, faster speed can be customized according to demand</p>			

*设备参数根据材质(Material)Q235/屈服强度(Yield strength)235MPa计算。

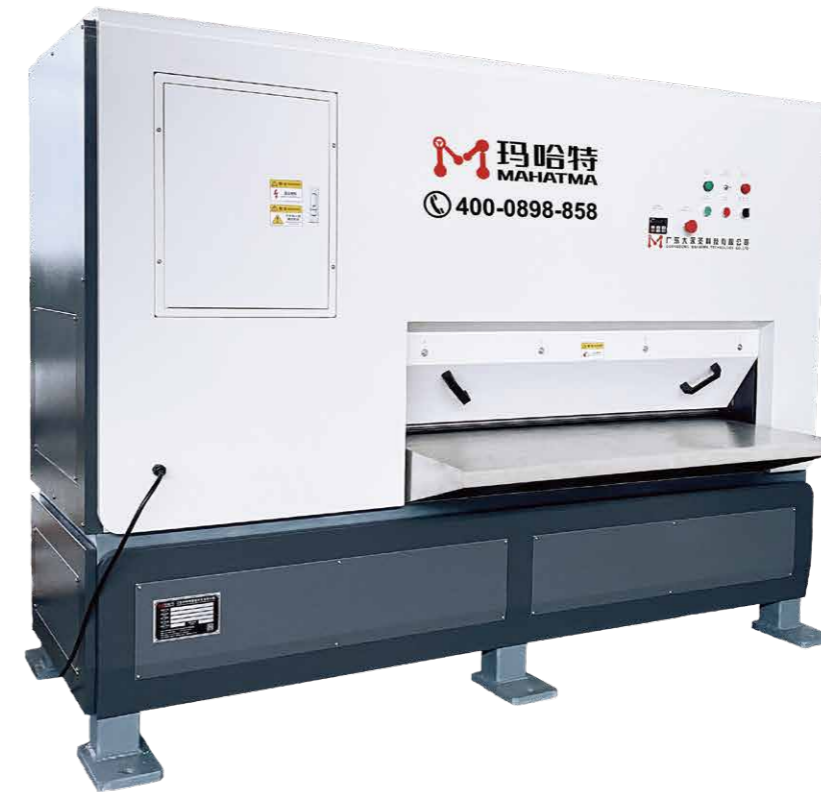
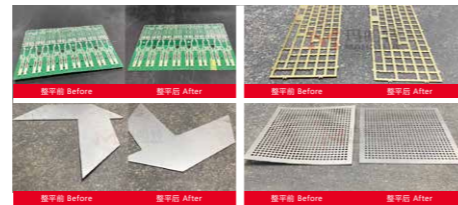
渺 Vague 基础型 四重普通矫平系列

VAGUE (Basic style): Four layers leveling machine series



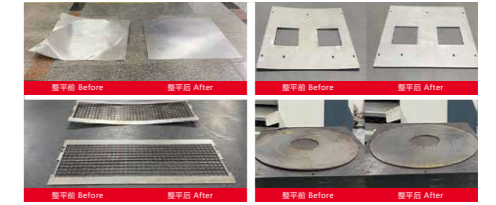
■ 整平前后对比图

Comparison chart before and after leveling



■ 整平前后对比图

Comparison chart before and after leveling



■ SHS20系列(Series)

厚度(Thickness): 0.2-1.5mm

机型 Model	SHS20-400-19A	SHS20-600-19A
宽度 Width	0-400mm	0-600mm
辊径 Roll diameter	20	20
额定厚度 Rated thickness	0.2-1.5mm	0.2-1.5mm
最大厚度 Maximum thickness	2.0mm	2.0mm
辊数 Number of rolls	19	19
最短工件 Shortest part	40	40
矫平速度 Leveling speed	0-10m/min	0-10m/min
电压 Voltage	AC三相380VAC 3-phase 380V	AC三相380VAC 3-phase 380V
选配 Optional	<ul style="list-style-type: none"> 滚轮快速清洁装置 Roller quick cleaning device 进出料流水线 Inlet and outflow assembly line 	<ul style="list-style-type: none"> 上下料取料机械手 Loading and unloading manipulator 自动堆料升降台 Automatic stacking lifting platform 上下料取料机器人 Loading and unloading robot 自动检测平台 Automatic detection platform
更大、特殊尺寸、更快速度可按需求订制 Larger, special size, faster speed can be customized according to demand		

*设备参数根据材质(Material)Q235/屈服强度(Yield strength)235MPa计算。

■ SHS32系列(Series)

厚度(Thickness): 0.5-2.0mm

机型 Model	SHS32-400-19A	SHS32-600-19A	SHS32-800-19A
宽度 Width	0-400mm	0-600mm	0-800mm
辊径 Roll diameter	32	32	32
额定厚度 Rated thickness	0.5-2.0mm	0.5-2.0mm	0.5-2.0mm
最大厚度 Maximum thickness	3.0mm	3.0mm	3.0mm
辊数 Number of rolls	19	19	19
最短工件 Shortest part	60	60	60
矫平速度 Leveling speed	0-10m/min	0-10m/min	0-10m/min
电压 Voltage	AC三相380VAC 3-phase 380V	AC三相380VAC 3-phase 380V	AC三相380VAC 3-phase 380V
选配 Optional	<ul style="list-style-type: none"> 滚轮快速清洁装置 Roller quick cleaning device 进出料流水线 Inlet and outflow assembly line 	<ul style="list-style-type: none"> 上下料取料机械手 Loading and unloading manipulator 自动堆料升降台 Automatic stacking lifting platform 	<ul style="list-style-type: none"> 上下料取料机器人 Loading and unloading robot 自动检测平台 Automatic detection platform
更大、特殊尺寸、更快速度可按需求订制 Larger, special size, faster speed can be customized according to demand			

*设备参数根据材质(Material)Q235/屈服强度(Yield strength)235MPa计算。

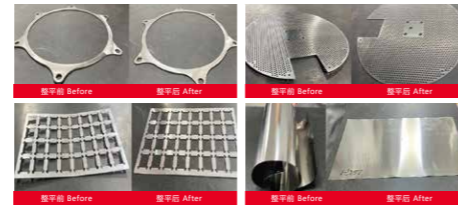
渺 Vague 基础型 四重普通矫平系列

VAGUE (Basic style): Four layers leveling machine series



■ 整平前后对比图

Comparison chart before and after leveling



■ SHS42系列(Series)

厚度(Thickness): 0.6-3.0mm

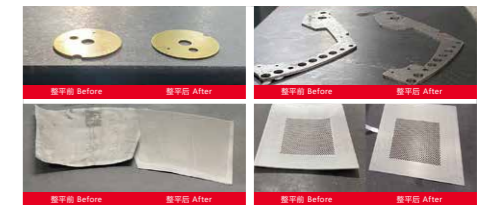
机 型 Model	SHS42-400-19A	SHS42-600-19A	SHS42-800-19A
宽 度 Width	0-400mm	0-600mm	0-800mm
辊 径 Roll diameter	42	42	42
额 定 厚 度 Rated thickness	0.6-3.0mm	0.6-3.0mm	0.6-3.0mm
最 大 厚 度 Maximum thickness	5.0mm	5.0mm	5.0mm
辊 数 Number of rolls	19	19	19
最 短 工 件 Shortest part	70	70	70
矫 平 速 度 Leveling speed	0-10m/min	0-10m/min	0-10m/min
电 压 Voltage	AC三相380VAC 3-phase 380V	AC三相380VAC 3-phase 380V	AC三相380VAC 3-phase 380V
选 配 Optional	<ul style="list-style-type: none"> 滚轮快速清洁装置 Roller quick cleaning device 进出料流水线 Inlet and outflow assembly line 	<ul style="list-style-type: none"> 上下料取料机械手 Loading and unloading manipulator 自动堆料升降台 Automatic stacking lifting platform 	<ul style="list-style-type: none"> 上下料取料机器人 Loading and unloading robot 自动检测平台 Automatic detection platform
更大、特殊尺寸、更快速度可按需求订制 Larger, special size, faster speed can be customized according to demand			

*设备参数根据材质(Material)Q235/屈服强度(Yield strength)235MPa计算。



■ 整平前后对比图

Comparison chart before and after leveling



■ SHS50系列(Series)

厚度(Thickness): 0.8-3.5mm

机 型 Model	SHS50-400-19A	SHS50-800-19A	SHS50-1000-19A
宽 度 Width	0-400mm	0-800mm	0-1000mm
辊 径 Roll diameter	50	50	50
额 定 厚 度 Rated thickness	0.8-3.5mm	0.8-3.5mm	0.8-3.5mm
最 大 厚 度 Maximum thickness	6.0mm	6.0mm	6.0mm
辊 数 Number of rolls	19	19	19
最 短 工 件 Shortest part	90	90	90
矫 平 速 度 Leveling speed	0-10m/min	0-10m/min	0-10m/min
电 压 Voltage	AC三相380VAC 3-phase 380V	AC三相380VAC 3-phase 380V	AC三相380VAC 3-phase 380V
选 配 Optional	<ul style="list-style-type: none"> 滚轮快速清洁装置 Roller quick cleaning device 进出料流水线 Inlet and outflow assembly line 	<ul style="list-style-type: none"> 上下料取料机械手 Loading and unloading manipulator 自动堆料升降台 Automatic stacking lifting platform 	<ul style="list-style-type: none"> 上下料取料机器人 Loading and unloading robot 自动检测平台 Automatic detection platform
更大、特殊尺寸、更快速度可按需求订制 Larger, special size, faster speed can be customized according to demand			

*设备参数根据材质(Material)Q235/屈服强度(Yield strength)235MPa计算。

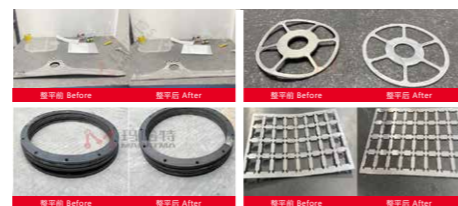
渺 Vague 基础型 四重普通矫平系列

VAGUE (Basic style): Four layers leveling machine series



■ 整平前后对比图

Comparison chart before and after leveling



■ SHS60系列(Series)

厚度(Thickness): 1.0-6.0mm

机 型 Model	SHS60-400-15A	SHS60-600-15A	SHS60-800-15A
宽 度 Width	0-400mm	0-600mm	0-800mm
辊 径 Roll diameter	60	60	60
额 定 厚 度 Rated thickness	1.0-6.0mm	1.0-6.0mm	1.0-6.0mm
最 大 厚 度 Maximum thickness	10.0mm	10.0mm	10.0mm
辊 数 Number of rolls	15	15	15
最 短 工 件 Shortest part	105	105	105
矫 平 速 度 Leveling speed	0-10m/min	0-10m/min	0-10m/min
电 压 Voltage	AC三相380VAC 3-phase 380V	AC三相380VAC 3-phase 380V	AC三相380VAC 3-phase 380V
选 配 Optional	<ul style="list-style-type: none"> 滚轮快速清洁装置 Roller quick cleaning device 进出料流水线 Inlet and outflow assembly line 	<ul style="list-style-type: none"> 上下料取料机械手 Loading and unloading manipulator 自动堆料升降台 Automatic stacking lifting platform 	<ul style="list-style-type: none"> 上下料取料机器人 Loading and unloading robot 自动检测平台 Automatic detection platform
更大、特殊尺寸、更快速度可按需求订制 Larger, special size, faster speed can be customized according to demand			

*设备参数根据材质(Material)Q235/屈服强度(Yield strength)235MPa计算。



■ 整平前后对比图

Comparison chart before and after leveling



■ SHS80系列(Series)

厚度(Thickness): 2.0-8.0mm

机 型 Model	SHS80-400-15A	SHS80-600-15A	SHS80-800-15A
宽 度 Width	0-400mm	0-600mm	0-800mm
辊 径 Roll diameter	80	80	80
额 定 厚 度 Rated thickness	2.0-8.0mm	2.0-8.0mm	2.0-8.0mm
最 大 厚 度 Maximum thickness	14.0mm	14.0mm	14.0mm
辊 数 Number of rolls	15	15	15
最 短 工 件 Shortest part	130	130	130
矫 平 速 度 Leveling speed	0-10m/min	0-10m/min	0-10m/min
电 压 Voltage	AC三相380VAC 3-phase 380V	AC三相380VAC 3-phase 380V	AC三相380VAC 3-phase 380V
选 配 Optional	<ul style="list-style-type: none"> 滚轮快速清洁装置 Roller quick cleaning device 进出料流水线 Inlet and outflow assembly line 	<ul style="list-style-type: none"> 上下料取料机械手 Loading and unloading manipulator 自动堆料升降台 Automatic stacking lifting platform 	<ul style="list-style-type: none"> 上下料取料机器人 Loading and unloading robot 自动检测平台 Automatic detection platform
更大、特殊尺寸、更快速度可按需求订制 Larger, special size, faster speed can be customized according to demand			

*设备参数根据材质(Material)Q235/屈服强度(Yield strength)235MPa计算。

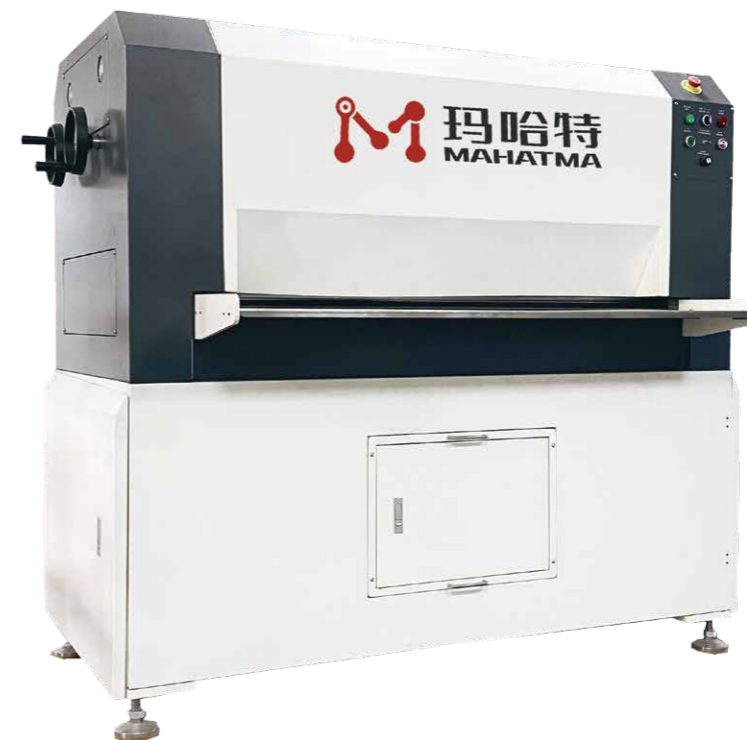
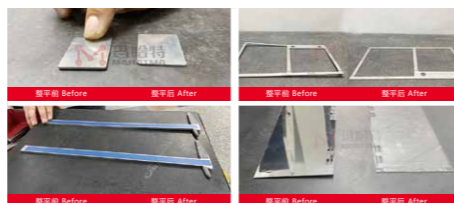
渺 Vague 基础型 二重普通矫平系列

VAGUE (Basic style): Two layers leveling machine series



■ 整平前后对比图

Comparison chart before and after leveling



■ 整平前后对比图

Comparison chart before and after leveling



■ STS42系列(Series)

厚度(Thickness): 0.4-3.0mm

机型 Model	STS42-200-19	STS42-400-19	STS42-600-19	STS42-800-19
宽度 Width	0-200mm	0-400mm	0-600mm	0-800mm
辊径 Roll diameter	42	42	42	42
额定厚度 Rated thickness	0.4-3.0mm	0.4-3.0mm	0.4-3.0mm	0.4-3.0mm
最大厚度 Maximum thickness	6.0mm	6.0mm	6.0mm	6.0mm
辊数 Number of rolls	19	19	19	19
最短工件 Shortest part	70	70	70	70
矫平速度 Leveling speed	0-10m/min	0-10m/min	0-10m/min	0-10m/min
电压 Voltage	AC三相380VAC 3-phase 380V	AC三相380VAC 3-phase 380V	AC三相380VAC 3-phase 380V	AC三相380VAC 3-phase 380V
选配 Optional	<ul style="list-style-type: none"> 滚轮快速清洁装置 Roller quick cleaning device 进出料流水线 Inlet and outflow assembly line 	<ul style="list-style-type: none"> 上下料取料机械手 Loading and unloading manipulator 自动堆料升降台 Automatic stacking lifting platform 	<ul style="list-style-type: none"> 上下料取料机器人 Loading and unloading robot 自动检测平台 Automatic detection platform 	
更大、特殊尺寸、更快速度可按需求订制 Larger, special size, faster speed can be customized according to demand				

*设备参数根据材质(Material)Q235/屈服强度(Yield strength)235MPa计算。

■ STS70系列(Series)

厚度(Thickness): 1.0-6.0mm

机型 Model	STS70-400-13	STS70-600-13	STS70-1300-13
宽度 Width	0-400mm	0-600mm	0-1300mm
辊径 Roll diameter	70	70	70
额定厚度 Rated thickness	1.0-6.0mm	1.0-6.0mm	1.0-6.0mm
最大厚度 Maximum thickness	10.0mm	10.0mm	10.0mm
辊数 Number of rolls	13	13	13
最短工件 Shortest part	120	120	120
矫平速度 Leveling speed	0-10m/min	0-10m/min	0-10m/min
电压 Voltage	AC三相380VAC 3-phase 380V	AC三相380VAC 3-phase 380V	AC三相380VAC 3-phase 380V
选配 Optional	<ul style="list-style-type: none"> 滚轮快速清洁装置 Roller quick cleaning device 进出料流水线 Inlet and outflow assembly line 	<ul style="list-style-type: none"> 上下料取料机械手 Loading and unloading manipulator 自动堆料升降台 Automatic stacking lifting platform 	<ul style="list-style-type: none"> 上下料取料机器人 Loading and unloading robot 自动检测平台 Automatic detection platform
更大、特殊尺寸、更快速度可按需求订制 Larger, special size, faster speed can be customized according to demand			

*设备参数根据材质(Material)Q235/屈服强度(Yield strength)235MPa计算。

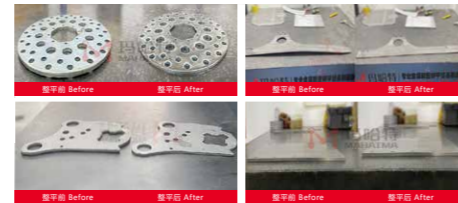
渺 Vague 基础型 二重普通矫平系列

VAGUE (Basic style): Two layers leveling machine series



■ 整平前后对比图

Comparison chart before and after leveling



■ 整平前后对比图

Comparison chart before and after leveling



■ STS90系列(Series)

厚度(Thickness): 2.0-8.0mm

机 型 Model	STS90-600-13	STS90-1000-13	STS90-1300-13
宽 度 Width	0-600mm	0-1000mm	0-1300mm
辊 径 Roll diameter	90	90	90
额 定 厚 度 Rated thickness	2.0-8.0mm	2.0-8.0mm	2.0-8.0mm
最 大 厚 度 Maximum thickness	14.0mm	14.0mm	14.0mm
辊 数 Number of rolls	13	13	13
最 短 工 件 Shortest part	150	150	150
矫 平 速 度 Leveling speed	0-10m/min	0-10m/min	0-10m/min
电 压 Voltage	AC三相380VAC 3-phase 380V	AC三相380VAC 3-phase 380V	AC三相380VAC 3-phase 380V
选 配 Optional	<ul style="list-style-type: none"> 滚轮快速清洁装置 Roller quick cleaning device 进出料流水线 Inlet and outflow assembly line 	<ul style="list-style-type: none"> 上下料取料机械手 Loading and unloading manipulator 自动堆料升降台 Automatic stacking lifting platform 	<ul style="list-style-type: none"> 上下料取料机器人 Loading and unloading robot 自动检测平台 Automatic detection platform
<p>更大、特殊尺寸、更快速度可按需求订制 Larger, special size, faster speed can be customized according to demand</p>			

*设备参数根据材质(Material)Q235/屈服强度(Yield strength)235MPa计算。

■ STS120系列(Series)

厚度(Thickness): 3.0-10.0mm

机 型 Model	STS120-600-13	STS120-1000-13	STS120-1400-13
宽 度 Width	0-600mm	0-1000mm	0-1400mm
辊 径 Roll diameter	120	120	120
额 定 厚 度 Rated thickness	3.0-10.0mm	3.0-10.0mm	3.0-10.0mm
最 大 厚 度 Maximum thickness	20.0mm	20.0mm	20.0mm
辊 数 Number of rolls	13	13	13
最 短 工 件 Shortest part	195	195	195
矫 平 速 度 Leveling speed	0-10m/min	0-10m/min	0-10m/min
电 压 Voltage	AC三相380VAC 3-phase 380V	AC三相380VAC 3-phase 380V	AC三相380VAC 3-phase 380V
选 配 Optional	<ul style="list-style-type: none"> 滚轮快速清洁装置 Roller quick cleaning device 进出料流水线 Inlet and outflow assembly line 	<ul style="list-style-type: none"> 上下料取料机械手 Loading and unloading manipulator 自动堆料升降台 Automatic stacking lifting platform 	<ul style="list-style-type: none"> 上下料取料机器人 Loading and unloading robot 自动检测平台 Automatic detection platform
<p>更大、特殊尺寸、更快速度可按需求订制 Larger, special size, faster speed can be customized according to demand</p>			

*设备参数根据材质(Material)Q235/屈服强度(Yield strength)235MPa计算。